



ANGELSTONE  
SILVER

# 2025 SILVER PRIZELIST

\*Pending EC and USEF approval

Last updated on April 28

# EquineChoice®

GENUINE NUTRITION



**Proud Title Sponsor of the**



**EquineChoice**  
**SILVER SERIES**

[equinechoice.ca](http://equinechoice.ca)



# 2025

## SILVER SHOW DATES

### CENTRAL ZONE

Caledon Equestrian Park, Palgrave

- Phase 1. May 1 - 3 (Thursday to Saturday)
- Phase 2. June 13 - 15
- Phase 3. June 28 - 30 (Saturday to Monday)
- Phase 4. August 15 - 17
- Phase 5. September 5 - 7

### WEST ZONE

Angelstone Events, Erin

- Phase 1: May 17 - 19 (Saturday to Monday)
- Phase 2: May 23 - 25
- Phase 3: July 4 - 6
- Phase 4: July 25 - 27
- Phase 5: September 5 - 7

■ **Equine Choice Silver Playoffs: September 24 - 28**

★ Central Banquet: Saturday, October 25

★ West Banquet: Sunday, October 26

5:00 pm at Angelstone Events Cabana Coast VIP Pavilion

\***Note:** Schooling day is the day before and a couple of classes actually compte on the warm-up day.

Schedules will be updated on [entries.equestrian.digital](https://entries.equestrian.digital) 10 days prior to each event.

## 5 MAY

					SAT	SUN
			1	2	3	4
5	6	7	8	9	10	11
12	13	14	15	16	17	18
19	20	21	22	23	24	25
26	27	28	29	30	31	

## 6 JUNE

						1
2	3	4	5	6	7	8
9	10	11	12	13	14	15
16	17	18	19	20	21	22
23	24	25	26	27	28	29
30						

## 7 JULY

	1	2	3	4	5	6
7	8	9	10	11	12	13
14	15	16	17	18	19	20
21	22	23	24	25	26	27
28	29	30	31			

## 8 AUGUST

				1	2	3
4	5	6	7	8	9	10
11	12	13	14	15	16	17
18	19	20	21	22	23	24
25	26	27	28	29	30	31

## 9 SEPTEMBER

1	2	3	4	5	6	7
8	9	10	11	12	13	14
15	16	17	18	19	20	21
22	23	24	25	26	27	28
29	30					

# 2025 SILVER SERIES POINT MULTIPLIERS

Points are calculated based on the finishing position in the class, entries in each class and multiplier of each event.

Point system: 1st - 10, 2nd - 8, 3rd - 6, 4th - 5, 5th - 4, 6th - 3, 7th - 2, 8th - 1

Therefore - if a horse wins a class with 20 entries at a show with a multiplier of 1.5x the calculation will be as follows

10 (points to win) x 20 (entries in the class) x 1.5 (multiplier of the event) = 300 points

---

## CENTRAL ZONE

Caledon Equestrian Park, Palgrave

- Phase 1. May 1 - 3 ... **1x**
- Phase 2. June 13 - 15 ... **1x**
- Phase 3. June 28 - 30 ... **1x**
- Phase 4. August 15 - 17 ... **1x**
- Phase 5. September 5 - 7 ... **1.5x**

---

## WEST ZONE

Angelstone Events, Erin

- Phase 1: May 17 - 19 ... **1x**
- Phase 2: May 23 - 25 ... **1x**
- Phase 3: July 4 - 6 ... **1x**
- Phase 4: July 25 - 27 ... **1x**
- Phase 5: September 5 - 7 ... **1.5x**
- **Equine Choice Silver Playoffs: September 24 - 28**



# 2025 SILVER SERIES CENTRAL SCHEDULE (TENTATIVE)

THURS	Main Stadium	Kubota Jumper Annex	BFL Hunter Ring	Indoor Ring	Meilsoe Main Hunter Ring
	10:00 AM - 6:00 PM Jumper Open Schooling	10:00 AM - 12:00 PM Crossrail Schooling  2:00 PM - 7:00 PM Jumper Open Schooling	10:00 AM - 1:30 PM Open Hunter Schooling 2:00 PM - 7:00 PM 25 - Road Hack 26 - Show Hack 27 - Pleasure Hack 30 - C Equitation Flat 29 - B Equitation Flat 28 - A Equitation Flat 24 - Adult Equitation Flat <i>Schooling on completion of equitations(s)</i>	11:00 AM - 12:00 PM Cross Rail Hunter Schooling  12:00 PM - 6:00 PM Open Hunter Schooling	10:00 AM - 6:00 PM Hunter Open Schooling
FRIDAY	7:30 AM 10 - 0.8m Jumper P&S Special 13 - 0.9m Jumper P&S Special 16 - 1.0m Jumper P&S Special 101 - 1.10m Open Welcome	8:00 AM 1 - Crossrail Jumper Power & Speed 4 - 0.6m Jumper Power & Speed 7 - 0.7m Jumper Power & Speed 71 - 0.75m Pony Jumper P& Speed	8:00 AM 290, 291 - Small Hunter Horse O/F 292 - Small Hunter Horse U/S 58, 59 - 2'6" Open Hunter O/F 60 - 2'6" Open Hunter U/S 55, 56 - 2'3" Open Hunter O/F 57 - 2'3" Open Hunter U/S	7:30 AM 52, 53 - 2'0" Hunter O/F 54 - 2'0" Hunter U/S 31, 32 - Crossrail Hunter O/F 33 - Crossrail Hunter U/S	7:30 AM 67, 68 - 3'3" Open Hunter O/F 69 - 3'3" Open Hunter U/S 64, 65 - 3'0" Open Hunter O/F 66 - 3'0" Open Hunter U/S 61, 62 - 2'9" Open Hunter O/F 63 - 2'9" Open Hunter U/S 270 - A Equitation O/F - Traditional* 271 - A Equitation O/F - Handy* 273 - B Equitation O/F - Handy* 274 - B Equitation O/F - Traditional* 276 - Adult Equitation O/F - Traditional* 277 - Adult Equitation O/F - Handy*
SATURDAY	8:00 AM 22 - Silver Series Jumper Medal (.90m) 98 - 0.95m Mini Prix 97 - 0.75m Mini Prix  5:00 PM 70 - LEADLINE  5:00 PM 100 - \$1,000 Saturday Night Grand Prix	8:00 AM 2 - Crossrail Jumper Speed 3 - Crossrail Jumper Classic 6 - 0.6m Jumper Classic 98 - 0.65m Mini Prix (.60 -.70m entires only)	8:00 AM 258, 259 - 2'6" Beginner Adult Hunter O/F 260 - 2'6" Beginner Adult Hunter U/S 158, 159 - 2'6" Beginner Children's Hunter O/F 160 - 2'6" Beginner Children's Hunter U/S 279 - C Equitation O/F - Traditional* 280 - C Equitation O/F - Handy* 49, 50 - Large Pony Hunter O/F 51 - Large Pony Hunter U/S	8:00 AM 43, 44 - Small Pony O/F 46, 47 - Medium Pony O/F 45 - Small Pony Hunter U/S 48 - Medium Pony Hunter U/S 40, 41 - Children's Pony Hunter O/F 42 - Children's Pony Hunter U/S 255, 256 - 2'3" Novice Adult Hunter O/F 257 - 2'3" Novice Adult Hunter U/S	8:00 AM 167, 168 - 3'3" Low Jr/Am Hunter O/F 169 - 3'3" Low Jr/Am Hunter U/S 164, 165 - 3'0" Child/Adult Hunter O/F 166 - 3'0" Child/Adult Hunter U/S 161, 162 - 2'9" Modified Children's Hunter O/F 163 - 2'9" Modified Children's Hunter U/S 261, 262 - 2'9" Modified Adult Hunter O/F 263 - 2'9" Modified Adult Hunter U/S 155, 156 - 2'3" Novice Children's Hunter O/F 157 - 2'3" Novice Children's Hunter U/S
SUNDAY	8:00 AM 18 - 1.10m Jumper Classic 15 - 0.9m Jumper Classic 200 - 1.10m -1.20m Open Speed	8:00 AM 9 - 0.7m Jumper Classic 72 - 0.75m Pony Jumper Classic 12 - 0.8m Jumper Classic	8:00 AM 23 - 2'9" Silver Series Hunter Medal 206 - 2'0" Pony Hunter Derby 204 - 2'0" Hunter Derby 205 - 2'0" Hunter Derby U17	8:00 AM 34, 35 - Puddle Hunters 10 & Under O/F 36 - Puddle Hunters 10 & Under U/S 37, 38 - Puddle Hunters 11+ O/F 39 - Puddle Hunters 11+ U/S 237 - Walk/Trot 11+ Equitation Flat 238 - Walk/Trot 11+ U/S 239 - Walk/Trot 11+ Poles 137 - Walk/Trot U10 Equitation Flat 138 - Walk/Trot U10 U/S 139 - Walk/Trot U10 Poles	8:00 AM 200 - 3'0" Angelstone Hunter Derby 201 - 2'6" Hunter Derby 18+ 202 - 2'6" Hunter Derby 17 & under 203 - 2'6" Pony hunter Derby

Schedules will be updated on <https://entries.equestrian.digital/> 14 days prior to each event.

\*Horses/ponies competing in over fences equitation classes are considered a division//Show management may change start times and ring schedule(s)

# 2025 SILVER SERIES WEST SCHEDULE (TENTATIVE)

THURS	BFL Stadium	Astamax Jumper Annex	Kubota Memorial Hunter	Premier Equestrian Hunter	EEC Memorial Hunter
	10:00 AM - 7:00 PM Jumper Open Schooling	10:00 AM - 6:00 PM Jumper Crossrail Open Schooling	10:00 AM - 1:00 PM Hunter Open Schooling 2:00 PM 25 - Road Hack 26 - Show Hack 27 - Pleasure Hack 30 - C Equitation Flat 29 - B Equitation Flat 28 - A Equitation Flat 24 - Adult Equitation Flat 6:00 PM - 7:00 PM Crossrail Hunter Schooling	11:00 AM - 7:00 PM Hunter Open Schooling	10:00 AM - 7:00 PM Hunter Open Schooling
FRIDAY	7:30 AM 10 - 0.8m Jumper Power & Speed 13 - 0.9m Jumper Power & Speed 16 - 1.0m Jumper Power & Speed 18 - 1.10m Open Welcome (Table A)	8:00 AM 1 - Crossrail Jumper Power & Speed 4 - 0.6m Jumper Power & Speed 7 - 0.7m Jumper Power & Speed 71 - 0.75m Pony Jumpers	8:00 AM 52, 53 - 2'0" Hunter O/F 54 - 2'0" Hunter U/S 31, 32 - Crossrail Hunter O/F 33 - Crossrail Hunter U/S	8:00 AM 55, 56 - 2'3" Open Hunter O/F 57 - 2'3" Open Hunter U/S 58, 59 - 2'6" Open Hunter O/F 60 - 2'6" Open Hunter U/S 290, 291 - Small Horse Hunter O/F 292 - Small Horse Hunter U/S	7:30 AM 23 - 2'9" Silver Series Hunter Medal 61, 62 - 2'9" Open Hunter O/F 63 - 2'9" Open Hunter U/S 64, 65 - 3'0" Open Hunter O/F 66 - 3'0" Open Hunter U/S 67, 68 - 3'3" Open Hunter O/F 69 - 3'3" Open Hunter U/S 270, 271 - A Equitation O/F 276, 277 - Adult Equitation O/F 279, 280 - C Equitation O/F 273, 274 - B Equitation O/F
SATURDAY	8:00 AM 97 - 0.75m Mini Prix 98 - 0.85m Laughton Mini Prix 99 - 0.95m Mini Prix  5:15 PM 70 - LEADLINE 5:45 PM 100 - \$1,000 Saturday Night Grand Prix	8:00 AM 6 - 0.6m Jumper Classic 2 - Crossrail Jumper Table A Speed 3 - Crossrail Jumper Classic 96 - 0.65m Mini Prix	8:00 AM 43/44 - Small/Medium Pony Hunter O/F 45/48 - Small/Medium Pony Hunter U/S 40, 41 - Children's Pony Hunter O/F 42 - Children's Pony Hunter U/S 155, 156 - 2'3" Novice Children's Hunter O/F 157 - 2'3" Novice Children's Hunter U/S	8:00 AM 258, 259 - 2'6" Beginner Adult Hunter O/F 260 - 2'6" Beginner Adult Hunter U/S 158, 159 - 2'6" Beginner Children's Hunter O/F 160 - 2'6" Beginner Children's Hunter U/S 255, 256 - 2'3" Novice Adult Hunter O/F 257 - 2'3" Novice Adult Hunter U/S	8:00 AM 167, 168 - 3'3" Low Jr/Am Hunter O/F 169 - 3'3" Low Jr/Am Hunter U/S 164, 165 - 3'0" Child/Adult Hunter O/F 166 - 3'0" Child/Adult Hunter U/S 161, 162 - 2'9" Mod Children's Hunter O/F 163 - 2'9" Modified Children's Hunter U/S 261, 262 - 2'9" Modified Adult Hunter O/F 263 - 2'9" Modified Adult Hunter U/S 49, 50 - Large Pony Hunter O/F 51 - Large Pony Hunter U/S
SUNDAY	8:00 AM 22 - Silver Series Jumper Medal 15 - 0.9m Jumper Classic 17 - 1.0m Jumper Classic	8:00 AM 9 - 0.7m Jumper Classic 73 - 0.75m Pony Jumpers 12 - 0.8m Jumper Classic	8:00 AM 34, 35 - Puddle Hunters U10 O/F 36 - Puddle Hunters 10 & Under U/S 37, 38 - Puddle Hunters 11+ O/F 39 - Puddle Hunters 11+ U/S 237 - Walk/Trot 11+ Equitation Flat 238 - Walk/Trot 11+ U/S 239 - Walk/Trot 11+ Poles 137 - Walk/Trot U10 Equitation Flat 138 - Walk/Trot U10 U/S 139 - Walk/Trot U10 Poles	8:00 AM 204 - 2'0" Hunter Derby 18+ 205 - 2'0" Hunter Derby U17 206 - 2'0" Pony Hunter Derby	8:00 AM 200 - \$400 Angelstone Hunter Derby 201 - 2'6" Hunter Derby 18+ 202 - 2'6" Hunter Derby U17 203 - 2'6" Pony Hunter Derby

Schedules will be updated on <https://entries.equestrian.digital/> 14 days prior to each event.

# 2025 SILVER SERIES PLAYOFFS SCHEDULE (TENTATIVE)



	BFL Stadium	Astamax Jumper Annex	EEC Memorial Hunter	Premier Equestrian Hunter	Kubota Memorial Hunter
<b>TUE</b>	9:00 AM - 5:00 PM Jumper Open Schooling	9:00 AM - 5:00 PM Crossrail Open Schooling	9:00 AM - 5:00 PM Hunter Open Schooling	9:00 AM - 5:00 PM Hunter Open Schooling	9:00 AM - 7:00 PM Hunter Open Schooling
<b>WED</b>	8:00 AM 13 - 0.9m Jumper Power & Speed 16 - 1.0m Jumper Power & Speed	8:00 AM 1 - Crossrail Jumper Power & Speed 5 - 0.6m Jumper Power & Speed 71 - 0.75m Pony Jumpers 30 - C Equitation Flat 29 - B Equitation Flat 28 - A Equitation Flat 24 - Adult Equitation Flat	8:00 AM 58, 59 - 2'6" Open Hunter O/F 61, 62 - 2'9" Open Hunter O/F	8:00 AM 600, 601 - 2'6" Small Hunter Horse O/F 64, 65 - 3'0" Open Hunter O/F 67, 68 - 3'3" Open Hunter O/F  4:00 PM 23 - Silver Series Hunter Medal (2'9")	8:00 AM 52, 53 - 2'0" Hunter O/F 55, 56 - 2'3" Open Hunter O/F
<b>THURS</b>	8:00 AM 10 - 0.8m Jumper Speed 22 - Silver Series Jumper Medal (0.9m)  4:00 PM 18 - 1.10m Open Welcome (Table A)	8:00 AM 3 - Crossrail Jumper Speed 6 - 0.6m Jumper Speed 8 - 0.7m Table A Speed	8:00 AM 58 - 2'6" Open Hunter Classic 60 - 2'6" Open Hunter U/S 602 - Small Hunter Horse O/F 603 - Small Hunter Horse U/S 61, 62 - 2'9" Open Hunter Classic 63 - 2'9" Open Hunter U/S 64 - 3'0" Open Hunter Classic 66 - 3'0" Open Hunter U/S	8:00 AM 52 - 2'0" Hunter Classic 54 - 2'0" Hunter U/S 55 - 2'3" Open Hunter Classic 57 - 2'3" Open Hunter U/S 67 - 3'3" Open Hunter Classic 69 - 3'3" Open Hunter U/S	8:00 AM 303,304 - C Equitation Fences 290,291 - B Equitation Fences 280,281 - A Equitation Fences 240,241 - Adult Equitation Fences  FLAT DIVISION 25 - Road Hack 26 - Show Hack 27 - Pleasure Hack
<b>FRIDAY</b>	8:00 AM 14 - 0.9m Jumper Classic 17 - 1.0m Jumper Classic 4:00 PM Playoff Nations Cup 6:00 AM \$10,000 Studio 54 Tack Room Contest Judging	8:00 AM 3 - Crossrail Jumper Classic 7 - 0.6m Jumper Classic 73 - 0.75m Pony Jumper Classic  2:00 PM 258, 259 - 2'6" Beginner Adult Hunter O/F	8:00 AM 161, 162 - 2'9" Modified Children's Hunter O/F 261, 262 - 2'9" Modified Adult Hunter O/F 158, 159 - 2'6" Beginner Children's Hunter O/F	8:00 AM 255, 256 - 2'3" Novice Adult Hunter O/F 155, 156 - 2'3" Novice Children's Hunter O/F 167, 168 - 3'3" Low Jr/Am Hunter O/F 164, 165 - 3'0" Child/Adult Hunter O/F	8:00 AM 31, 32 - Crossrail Hunter O/F 34, 35 - Puddle Hunters U10 O/F 37, 38 - Puddle Hunters 11+ O/F
<b>SATURDAY</b>	8:00 AM 9 - 0.7m Jumper Classic 12 - 0.8m Jumper Classic 3:00 PM PODIUM PRESENTATIONS (For completed divisions) 4:00 PM 70 - LEADLINE 4:30 PM 100 - \$1,000 Saturday Night Grand Prix 7:00 PM STUDIO 54 & PLAYOFF DANCE-OFF FEATURING DJ SWIFT	8:00 AM 161 - 2'9" Modified Children's Hunter Classic 163 - 2'9" Modified Children's Hunter U/S 261 - 2'9" Modified Adult Hunter Classic 263 - 2'9" Modified Adult Hunter U/S 158 - 2'6" Beginner Children's Hunter Classic 160 - 2'6" Beginner Children's Hunter U/S 258 - 2'6" Beginner Adult Hunter Classic 260 - 2'6" Beginner Adult Hunter U/S	8:00 AM 40, 41 - Children's Pony Hunter O/F 43, 44 - Small Pony Hunter O/F 45 - Small Pony Hunter U/S 46, 47 - Medium Pony Hunter O/F 48 - Medium Pony Hunter U/S 49, 50 - Large Pony Hunter O/F 51 - Large Pony Hunter U/S	8:00 AM 255 - 2'3" Novice Adult Hunter Classic 257 - 2'3" Novice Adult Hunter U/S 155 - 2'3" Novice Children's Hunter Classic 157 - 2'3" Novice Children's Hunter U/S 164 - 3'0" Child/Adult Hunter Classic 166 - 3'0" Child/Adult Hunter U/S 167 - 3'3" Low Jr/Am Hunter Classic 169 - 3'3" Low Jr/Am Hunter U/S	8:00 AM 31 - Crossrail Hunter Classic 33 - Crossrail Hunter U/S 34 - Puddle Hunters U10 Classic 36 - Puddle Hunter U10 US 37 - Puddle Hunters 11+ Classic 39 - Puddle Hunters 11+ U/S
<b>SUNDAY</b>	8:00 AM 501 - 0.65m Mini Prix 502 - 0.75m Mini Prix PODIUM PRESENTATION (For completed divisions) 503 - 0.85m Loughton Memorial Mini Prix FINAL PODIUM PRESENTATION	8:00 AM 200 - \$400 Angelstone Hunter Derby 201 - 2'6" Hunter Derby 18+ 202 - 2'6" Hunter Derby U17 203 - 2'6" Pony Hunter Derby	8:00 AM 40 - Children's Pony Hunter Classic 42 - Children's Pony Hunter U/S 43 - Small Pony Hunter Classic 45 - Small Pony Hunter U/S 46 - Medium Pony Hunter Classic 48 - Medium Pony Hunter U/S 49 - Large Pony Hunter Classic 51 - Large Pony Hunter U/S	8:00 AM 204 - 2'0" Hunter Derby 18+ 205 - 2'0" Hunter Derby U17 206 - 2'0" Pony Hunter Derby	8:00 AM 237 - Walk/Trot 11+ Equitation Flat 238 - Walk/Trot 11+ U/S 239 - Walk/Trot 11+ Poles 240 - Walk/Trot 11+ Poles Classic 137 - Walk/Trot U10 Equitation Flat 138 - Walk/Trot U10 U/S 139 - Walk/Trot U10 Poles 140 - Walk/Trot U10 Poles Classic

Schedules will be updated on <https://entries.equestrian.digital/> 14 days prior to each event.



elcome to the 2025 Silver Season!

Our goal is to continue to improve as an organization, improve our product, and make your experience at both parks a memorable one.

You will see upgrades continue to take place at both parks, and that is a result of the growth of this series. We are committed to continuing to improve the parks.

The 2024 Equine Choice Silver Series Playoffs were incredible, and we can't wait for the 2025 race to the Silver Series Playoffs.

Thank you for supporting this series, our whole team greatly appreciates it.

Sincerely,

CEO Angelstone Events

*Kecan White*



# SHOW SITE INFORMATION

## ANGELSTONE EVENTS

| **Silver Show Manager:** Madrigal White | **General Inquiries:** [office@angelstone.ca](mailto:office@angelstone.ca)

---

**\*NEW:** ENTRIES WILL BE ACCEPTED ONLY THROUGH [ENTRIES.EQUESTRIAN.DIGITAL](https://www.angelstone.ca/entries)

---

### WEST ZONE / Angelstone Events

- **Show Ground Address:** 8720 Wellington County Rd 50, Erin, ON N0B 2K0  
View Map: <https://g.page/angelstonetournaments>
- **Show Office:** [ASEoffice@angelstone.ca](mailto:ASEoffice@angelstone.ca)



### CENTRAL ZONE / Caledon Equestrian Park

- **Show Ground Address:** 200 Pine Ave, Caledon, ON L7E 0M1  
\*Horse trailers and campers have to come to 49 Buckstown Trail entrance  
View Map: <https://goo.gl/maps/E5pWuEwzSEmEpNZNA>
- **Show Office:** [CEPoffice@angelstone.ca](mailto:CEPoffice@angelstone.ca)



### On-Site Campground Available

A limited number of Camper spaces are available at both Angelstone Events and Caledon Equestrian Park. Campgrounds must be booked through online application only. Camper spaces will be assigned by Angelstone's show office. First reserve, first serve basis.

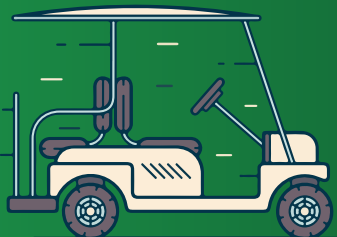
#### | **Rates** (all price + HST)

**Seasonal:** [www.angelstone.ca/tournaments/accommodations/2025-silver-series-seasonal-camper-spot-reservation-form/](https://www.angelstone.ca/tournaments/accommodations/2025-silver-series-seasonal-camper-spot-reservation-form/)

- Silver Phases (Seasonal rates only): Central - \$1499.00 (40 small/25 large spots – hydro/water hookups)
- West: \$1399.00 (82 spots – hydro/water hookups) Pump outs are available via a third-party supplier.

**Weekly:** [www.angelstone.ca/tournaments/accommodations/camper-space-reservation-silver-dressage/](https://www.angelstone.ca/tournaments/accommodations/camper-space-reservation-silver-dressage/)

- Silver Phases: \$325.00
- Silver Playoffs: \$399.00 / without service: \$150.00 (20 spots available)



**ALBION  GOLF CARS** are available for rent at CEP

The Caledon Equestrian Park is an approximately 100-acre property. We recommend that you consider renting a golf cart. Available only at CEP. Advanced order only.

[www.angelstone.ca/forms/CEP\\_RENTAL\\_FORM\\_2025v1.pdf](https://www.angelstone.ca/forms/CEP_RENTAL_FORM_2025v1.pdf)

# SILVER SERIES MANAGEMENT TEAM



**Keenan White**  
CEO  
[keenan@angelstone.ca](mailto:keenan@angelstone.ca)



**Ryan Clermont**  
Vice President  
[ryan@angelstone.ca](mailto:ryan@angelstone.ca)



**Madrigal White**  
Silver Show Manager  
[madrigal@angelstone.ca](mailto:madrigal@angelstone.ca)



**Georgia Ormerod**  
Social Media Manager  
[georgia@angelstone.ca](mailto:georgia@angelstone.ca)



**Danielle Kendal**  
Sponsorship Director  
[danielle@angelstone.ca](mailto:danielle@angelstone.ca)



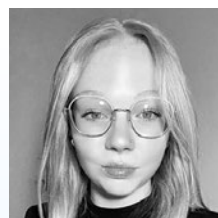
**Kiria Shantz**  
Office Manager  
[kiria@angelstone.ca](mailto:kiria@angelstone.ca)



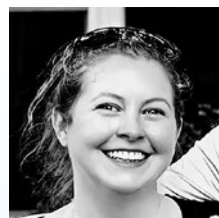
**Yvonne Busby**  
Office Manager  
[yvonne@angelstone.ca](mailto:yvonne@angelstone.ca)



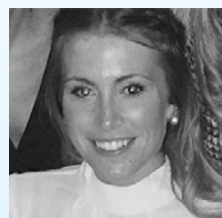
**Jessica Daubney**  
Office Administration  
[jessica@angelstone.ca](mailto:jessica@angelstone.ca)



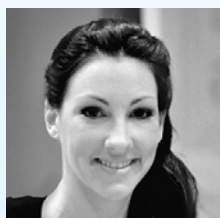
**Sky Tremaine**  
Office  
[sky@angelstone.ca](mailto:sky@angelstone.ca)



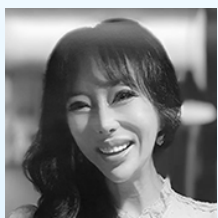
**Avery Gahagan**  
Customer Relations  
[avery@angelstone.ca](mailto:avery@angelstone.ca)



**Kellie White**  
Event Marketing Manager  
[kellie@angelstone.ca](mailto:kellie@angelstone.ca)



**Kelly Clermont**  
Hospitality Manager  
[kelly@angelstone.ca](mailto:kelly@angelstone.ca)



**Victoria Clermont**  
Creative Director  
[victoria@angelstone.ca](mailto:victoria@angelstone.ca)



**Christopher Rintoul**  
Site Manager



**Paul Bélanger**  
Co-Manager



**Aj McCoy**  
Co-Manager  
[aj@angelstone.ca](mailto:aj@angelstone.ca)



**Andrew Mattison**  
Crew Manager  
[drew@angelstone.ca](mailto:drew@angelstone.ca)



**Peter Canzio**  
Crew Manager



**Dan Galang**  
Finance  
[dan@angelstone.ca](mailto:dan@angelstone.ca)



**Paul Tan**  
Finance  
[paul@angelstone.ca](mailto:paul@angelstone.ca)

## 2025 STAFF

**Timing:** Angelstone Events

**Presentations:** ASE - TBD / CEP - Penny Murray

**Photographer:** Janine Van Oostrom | [www.manemedia.ca](http://www.manemedia.ca)

**Food Services:** Lein Catering 416-251-5858

**Medic:** Odyssey Medical

**Veterinarians:** Trillium Equine Vet Services 365-799-6470

**ASE On-Site Farrier:** Jordan Ouellet 905-807-6958

**CEP On-Site Farrier:** Jordan Ouellet 905-807-6958

# 2025

## OFFICIALS

(TENTATIVE)

### CENTRAL

CALEDON EQUESTRIAN PARK, PALGRAVE

#### Phase 1: April 30 - May 3

- **Judges:** Jeanne Mervyn, Julie McDonnell, DJ Murtagh
- **Jumper Jury:** Jennifer De Neef, Cathy Aker
- **Steward:** Allan Erhlick, Marj O'Donnell
- **Course Designer:** Greg Kuti, Rebecca McGovern, Chris Gahan

#### Phase 2: June 12 - 15

- **Judges:** Diane Ratigan, Jeanne Mervyn, DJ Murtagh
- **Jumper Jury:** Jennifer De Neef, Cathy Aker
- **Steward:** Marj O'Donnell, Caroline Hawson
- **Course Designer:** Rebecca McGovern, Greg Kuti, Charles Faubert

#### Phase 3: June 26 - 30

- **Judges:** Di Langmuir, Diane Ratigan, Brad Gabriel
- **Jumper Jury:** Jennifer De Neef, DJ Murtagh
- **Steward:** Marj O'Donnell, Caroline Hawson
- **Course Designer:** Susan Fish, Chris Gahan, Greg Kuti

#### Phase 4: August 13 - 17

- **Judges:** Di Langmuir, Steve Santia, DJ Murtagh
- **Jumper Jury:** Jennifer De Neef, Cathy Aker
- **Steward:** Marj O'Donnell, TBA
- **Course Designer:** Rebecca McGovern, Max Goos, Greg Kuti

#### Phase 5: September 3 - 7

- **Judges:** Jeanne Mervyn, Robyn Baechler, Amanda Connelly
- **Jumper Jury:** Kathryn Weaver, DJ Murtagh
- **Steward:** Marj O'Donnell, Martha Younger
- **Course Designer:** Rebecca McGovern, Greg Kuti, TBA

### WEST

ANGELSTONE EVENTS, ERIN

#### Phase 1: May 16 - 19 (Friday to Monday)

- **Judges:** Ashton Belcher, Amanda Connelly, DJ Murtagh
- **Jumper Jury:** Jennifer de Neef, Kathryn Weaver
- **Steward:** Carol Mueller-Wilm, Martha Younger
- **Course Designer:** Greg Kuti, Charles Faubert, Max Goos

#### Phase 2: May 22 - 25

- **Judges:** Jeanne Mervyn, Julie McDonnell, Steven Santia
- **Jumper Jury:** Jennifer de Neef, Cathy Aker
- **Steward:** Carol Mueller-Wilm, Susan Fish
- **Course Designer:** Greg Kuti, Charles Faubert, Max Goos

#### Phase 3: July 2 - 6

- **Judges:** Rebecca McGovern, Robyn Baechler, Brad Gabriel
- **Jumper Jury:** Jennifer de Neef, Cathy Aker
- **Steward:** Carol Mueller-Wilm, Laura Taylor
- **Course Designer:** Max Goos, Greg Kuti, Mike Giovinazzo

#### Phase 4: July 23 - 27

- **Judges:** Sherri Whitworth-Denouden, Jeanne Mervyn, DJ Murtagh
- **Jumper Jury:** Jennifer de Neef, Cathy Aker
- **Steward:** Carol Mueller-Wilm, Martha Younger
- **Course Designer:** Mike Giovinazzo, Max Goos, Greg Kuti

#### Phase 5: September 3 - 7

- **Judges:** Ryan Roy, Diane Ratigan, Jodie Bowen
- **Jumper Jury:** Jennifer de Neef, Cathy Aker
- **Steward:** Carol Mueller-Wilm, Laura Taylor
- **Course Designer:** Charles Faubert, Max Goos, Mike Giovinazzo

#### PLAYOFFS: September 24 - 28

- **Judges:** Diane Ratigan, Lauren Hayes, DJ Murtagh
- **Jumper Jury:** Jennifer de Neef, Cathy Aker
- **Steward:** Carol Mueller-Wilm, Allan Erhlick
- **Course Designer:** Rebecca McGovern, Greg Kuti, Mike Giovinazzo

# WEST ZONE

## ANGELSTONE EVENTS

### SHOW GROUNDS



8720 Wellington County Rd 50, Erin, ON N0B 2K0





# THE VENUE

## WEST ZONE - ANGELSTONE EVENTS

Address: 8720 Wellington County Rd 50, Erin, Ontario N0B 2K0 CANADA



The Angelstone venue is located in the town of Erin, Ontario, less than a half-hour drive northwest of Toronto's Pearson Airport.

Since its founding in 2011, Angelstone's sprawling 70-acre venue has grown to showcase five competition rings. The BFL Stadium is the main arena on the site and can seat up to 5,000 spectators. The stadium features various seating options and offers a one-of-a-kind experience.

Our other feature arenas are the EEC Memorial Ring and the AstaMax Ring. These arenas offer sport at all levels.

A night at Angelstone places our visitors closer to the action, where you will hear the horses and riders interacting with each other over the stillness of the night, followed by the eruption of the crowds after each stellar performance.

This is simply the best venue to take in the exhilarating sport while being surrounded by an elite level of personal service and amenities.

Main Stadium\*  
Premier Ring\*  
EEC Memorial Ring\*  
Kubota Ring\*  
Astamax Ring\*  
Grass Derby Field  
Lunging Area\*

\*All-weather footing

Cabana Coast VIP Pavilion  
Cloud9 Lounge  
On-Site Restaurant  
Vendor Area  
Family Zone  
RV Area  
Stabling Area  
Ship-In Area





# CENTRAL ZONE

## CALEDON EQUESTRIAN PARK SHOW GROUNDS



MOUNT HOPE RD.

TRAILER  
PARKING

SERVICE AREA  
& DELIVERIES

SHIP-IN  
PARKING

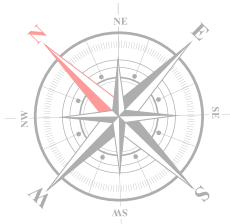
SHIP-IN  
PARKING

**NORTH ENTRANCE**

49 BUCKSTOWN TRAIL  
TRUCKS/TRAILERS/RV/DELIVERIES

PINE AVE.

BUCKSTOWN TRAIL



HIGHWAY 50 (QUEEN STREET)

- 1 Main Stadium
- 2 Kubota Annex Jumper Ring
- 3 Meilsoe Hunter Ring (H1)
- 4 Warm-Up Rings
- 5 BFL Hunter Ring (H2)
- 6 Future development
- 7 Hack / Lunge
- 8 Stabling
- 9 RV Area
- 10 Leon's Lounge
- 11 Pavillion Grandstand
- 12 Ringside Boxes
- 13 Vendor Area
- 14 Indoor Arena Complex
- 15 Show Office
- 16 Indoor Stabling
- 17 FEI Stabling
- 18 Judges Tower
- 19 Vet / Farrier / Golf Cart Rental

Parking

Handicap Parking

Restaurant

Manure

**MAIN ENTRANCE**

200 PINE AVE

# THE VENUE

## CENTRAL ZONE - CALEDON EQUESTRIAN PARK

Address: 200 Pine Ave, Caledon, Ontario L7E 0M1 CANADA



The equestrian jewel of eastern Canada is located in Palgrave, Ontario. Caledon Equestrian Park is now home annually to dozens of the most prestigious equestrian events in Canada. It offers temporary accommodations for nearly 1,000 horses and has 5 international competition rings. The park also provides first-class facilities for the many competitors from all over the world as well as those living within Canada's largest horse community (the Caledon/King corridor).

The Caledon Equestrian Park was selected as the equestrian venue by the 2015 Pan American Games. The venue now serves the community and the sport and will continue for many years to come. Horse lovers from around the world visit the region and enjoy the many wonderful activities that the area has to offer. As originally hoped, the Caledon Equestrian Park is now a major "Destination" in the Hills of Headwaters.

- 4 outside all-weather rings and warm-up areas
- 2 natural sand rings and warm-up areas
- Largest indoor competition ring and warm-up ring in Ontario
- 1,000 stalls
- Full service restaurants on the site
- Certified Chef de Cuisine and professional wait and kitchen staff
- Fully licensed Leon's lounge overlooking the International ring
- Patio and lounge areas
- Climate-controlled meeting, seminar and breakout areas
- The Palgrave Room with seating capacity of 120







AURORA – KING – CALEDON – MONO – MULMUR

# CAROLYN SCIME

DISTINCTIVE PROPERTIES — TOWN & COUNTRY





# 2025

## SHOW FEES

<b>*Stall Request</b>   Hay and Shavings must be booked via <a href="https://entries.equestrian.digital">entries.equestrian.digital</a>	*All price + HST
<b>Entry Fee: ZONE / Playoffs</b> (not including drug fee, facility/medic fee, hay/shavings, and tack stalls)	<b>PASS / \$499.00</b>
<b>Facility Fee</b> (mandatory)	<b>\$25.00</b>
<b>Medic Fee</b> (mandatory)	<b>\$22.00</b>
<b>Drug Fee: Silver / Bronze</b> (mandatory)	<b>\$8.00 / \$4.00</b>
<b>Canadian Sport Development Fee</b> (mandatory)	<b>\$7.00</b>
<b>Washroom Fee</b> (mandatory)	<b>\$10.00</b>
<b>Zone Premium Stabling / Playoff Premium Stabling</b> (Caledon A block / Angelstone ABC block)	<b>\$29.00 / \$99.00</b>
<b>Weekend Tack Stall Fee / Playoffs</b>	<b>\$125.00 / \$225.00</b>
<b>Shavings</b> (per bag)	<b>\$12.50</b>
<b>Hay</b> (per bale)	<b>\$18.00</b>
<b>Post Entry Fee</b> (see Rules & Regulations)	<b>\$50.00</b>
<b>Stall Cleaning Fee</b> (if stall is not gutted upon departure of show grounds)	<b>\$69.00</b>
<b>Layover Fee</b> (see Rules & Regulations)	<b>\$50.00</b>
<b>Camper Fee: Phases / Playoffs</b>	<b>\$325.00 / \$399.00</b>
<b>Pass Transfer Fee</b> (After April 1 <sup>st</sup> , 2025)	<b>\$100.00</b>
<b>NSF Cheque Fee</b> (Non-sufficient-funds / see Rules & Regulations)	<b>\$60.00</b>



# RULES & REGULATIONS

The Silver Series Tournaments are EC Sanctioned Silver/Bronze competitions members, of Equestrian Canada 11 Hines Road, Suite 201, Ottawa, Ontario K2K 2X1 and are governed by the rules of EC.

Statement of Principles: The Equestrian Canada Statement of Principles - Section A: General Regulations A602.3(f) as of 2025. The statement of Principles has been moved from the Rules of Equestrian Canada to the Code of Conduct and Ethics, which can be found on their website:

[https://equestrian.ca/wp-content/uploads/2025-Section-A\\_CHANGESVisible\\_English-1-1.pdf](https://equestrian.ca/wp-content/uploads/2025-Section-A_CHANGESVisible_English-1-1.pdf)

(A602.9) When registering for EC sanctioned competitions, athletes must indicate the name of their coach on the entry form or specify that they are self-coached. Coaches from other countries, must be in good-standing with their home federation and must declare/have proof of insurance. See Rules of Equestrian Canada, Section A, General Regulations, Article 102, Safe Sport Environments.

(A602.2) Every class offered herein that is covered by the rules and specifications of the current EC Rules will be held and judged in accordance with the EC Rule Book. All questions not covered by these rules shall be decided by the show management, whose decision will be final.

(A602.4) Canadian entries are required to hold both an EC Horse Recording Number and have paid the Horse Recording Annual Activation fee to compete, or if owned by a temporary sport license hold, a Temporary Horse Registration form must be purchased at each competition entered. Foreign entries must sign an affidavit. (See A404)

(A602.5) Any horse entered in any class at a competition may be selected for equine medication control while at the event location.

(A602.7) Per Article A801, every entry at an EC-sanctioned competition shall constitute an agreement by the person(s) responsible that the owner, lessee, trainer, manager, agent, coach, driver, rider, and horse shall be subject to the EC constitution, all EC rules, and any additional rules set by the competition. It is the responsibility of all individuals participating in any capacity in EC-sanctioned competitions to be knowledgeable about the EC constitution, the applicable EC rules, and any additional rules imposed by the competition. Do not participate in this EC-sanctioned competition in any capacity if you do not consent to be bound by the EC constitution, rules, and any additional competition rules.

(A602.8) All horses attending Equestrian Canada sanctioned competitions must have met the requirements of Article A519, Vaccinations. See Rules of Equestrian Canada, Section A, General Regulations, Article A519, Vaccinations. All competitors must be able to show the proof of vaccinations upon request.

## ELIGIBILITY FOR COMPETITION/PLAYOFFS AND YEAR-END AWARDS

- **All RIDERS, OWNERS and COACHES** must provide proof of valid 2025: EC BRONZE or EC SILVER for appropriate divisions listed herein, OE (Ontario Equestrian) and memberships must be provided prior to competing at ALL SHOWS. All RIDERS, OWNERS and COACHES must be current members in good standing before the first horse show for points to apply and remain in good standing all year long.
- Horses/ponies must have a valid EC recording number for all SILVER classes/divisions listed.
- The top twelve from each division or 75% of point earners will be eligible to compete at Playoffs. In the event a division has 50+ during the season – 24 will be eligible for Playoffs.
- Playoff entries must be completed online [entries.equestrian.digital](https://entries.equestrian.digital) by **September 8<sup>th</sup>, 2025**
- Year-end Awards Banquets will be held at Angelstone Events Canaba Coast VIP Pavilion at 5:00 pm
  - Central Banquet: Saturday, October 25<sup>th</sup>
  - West Banquet: Sunday, October 26<sup>th</sup>



# Rules & Regulations: Administration

\*All price + HST

- **Silver Series is open to 2025 Silver Series Pass Holders ONLY.**
- **STALL FEES and SEASON PASSES ARE NON-REFUNDABLE after booking.**
- **Entries** - are to be completed online at <https://entries.equestrian.digital/t>. Entries are due 21 days before the horse show to avoid a post-entry fee. All entries must include a complete address, EC, OE, or USEF number, and horse recording numbers (Silver). It is the exhibitor's responsibility to provide proof of all necessary memberships. Any exhibitor competing without proper membership will be required to purchase one to compete, as per EC rules.
- **Competitor numbers** - will NOT be issued without full payment or a signed open cheque left or credit card information with the show secretary to cover all charges incurred by the exhibitor.
- **All outstanding accounts** - any outstanding account to the Angelstone Group of companies must be paid in full before the number is issued. Must be paid in full before an entry can be accepted and processed. All accounts must be settled before the next show, otherwise, entries will be denied, and no points awarded. Please note that any outstanding accounts at year-end will not be eligible to compete in the Specialty classes or receive year-end awards.
- **Veterinarian and/or Farrier bills** - incurred at the horse show (medical emergencies, farm calls, etc.) must be settled preferably the day the costs are incurred, but no later than 2 weeks after the event. All unpaid bills to the series "On-call Veterinarian" will result in an outstanding account for the competitor, thus the competitor will not be able to compete at any Silver Series Show nor the Playoffs until the account has been paid in full.
- **Stabling** - is limited and must be arranged directly with the individual show facility. Season Pass holders will have secure stabling spaces. Cross ties are not permitted in aisle ways. Stable requests MUST be booked via [equestrian.digital](https://equestrian.digital) 21 days before the show.
- **Stall Cleaning Fee** - A \$69.00 fee will be charged to ALL exhibitors whose stall is not cleaned before departure of the show.
- **Layover Fee** - horses who remain on site between back-to-back show weeks will be charged a \$50.00 layover fee
- **Facility / Medic Fee** - \$40.00/horse. This fee covers extra precautionary measures set in place to keep our people and competitors safe throughout day-to-day operations during competitions.
- **NSF cheques** - \$60.00 bank penalty charges will be added to all accounts paid with cheques that are returned from the bank for any reason.
- **Campers** - must be booked online at: <https://angelstone.ca/tournaments/accommodations/2025-silver-series-seasonal-camper-spot-reservation-form/>  
Campers' rules and regulations are included in the online application form. The camper sites, for Silver, are seasonal costs.
- **Show Schedules** - Show management reserves the right to change or amend show schedules up to one hour prior to the designated class. Show management reserves the right to combine divisions at any time.
- **Ribbons** - ribbons are the responsibility of the competitor, not show management. Ribbons will be available via presentation or at the in-gate any time on the SAME DAY of competition ONLY. Ribbons will not be held. Please do not collect ribbons that do not belong to you.
- **The hack division** is considered a division. Entries wishing to compete in the hack division plus two divisions can pay an additional fee of \$79.00. This exemption is not valid for any other third division.  
**Walk/Trot** - Entries already competing in two divisions and wishing to compete in the walk/trot division in addition to those divisions, can pay an additional fee of \$100.00. This exemption is not valid for any other third division.
- ✳ The intention behind a 2-division limit is not only for time limits with running events with over 500 horses but also for the welfare of the horses involved. Especially on the longer summer days with the heat.  
Other zones also allow for 2 divisions per day, based on their entries, however, Silver Series West and Silver Series Central do not allow for additional divisions or classes. We allow for only the Hack Division, which runs on a separate day from the rest of the event. The fee of \$50.00 for any entry that wants to compete in the Grand Prix AND a Derby will be added upon consideration.
- **Bio Security Requirements** - EHV 1-4 shots required every six months and temp check 2x a day. Stewards may check any horse's log at any time during the competition.

# Rules & Regulations: General

\*All price + HST

- All horses may compete in 2 divisions (or jumper classes equalling 2 divisions). Plus one medal, one equitation, one Mini Prix (per rider), one derby, and one Grand Prix. \$250/division fine.
- **Amateur riders must have a valid "Amateur Status" designation as per EC Article G108.**
- COMPETITION NUMBERS must be worn by all horses competing and must be VISIBLE.
- Dogs MUST be kept on a leash at all times while on the property. There will be a \$100.00 fine for any disruption to competition caused by a loose dog.
- Vehicles - All vehicles must be parked in designated areas only. There is no parking on the roads or in the barn areas at any time. All motorized vehicles including golf carts, scooters, dirt bikes, 4-wheelers, etc. must be operated by Fully Licensed Drivers Only. Unlicensed Drivers will be issued a warning on their first offence. Additional offences will be fined \$250 per violation. Cars parked in the stabling area will be fined \$100 per violation.
- Horse trailers must be parked in the designated area. ASE: by the main entrance, CEP: by the stabling area. CEP: Horse trailers and campers have to come to 49 Buckstown Trail entrance.
- Protests, if any, must be made in writing and must be in the possession of the show secretary within 48 hours of the completion of the class concerned. No protests will be considered unless accompanied by a deposit of \$100.00 cash that shall be forfeited to the committee if the said process is not sustained. (Article A1206).
- Protesting an animal's height requires a \$100.00 cash deposit. Protests are made through the steward at the show. There will also be Exhibitor Report forms available in the show office that can be submitted to the show office, the steward or directly to the OE.
- Polo shirts are acceptable attire in the jumper rings unless otherwise noted. Proper attire (jackets, ties, etc) is required for the Grand Prix and for all Hunter divisions and equitation/medal classes.
- Approved headgear: all competitors must wear proper fitting, ASTM-approved protective headgear, with the safety harness correctly secured while mounted in competition or on event grounds.
- In the event of a fall, the exhibitor must leave the ring dismounted.
- Riders are allowed to show Hors Concours in Jumper Ring at the discretion of the Show Manager - Art. G201.3
- Please consider the Equestrian Canada rules of conduct with respect to ringside manners and behaviours. In the event of TRAINER CONFLICT, the ring that takes priority for that day will be announced and posted in the office. It is expected that a rider waiting for their trainer must be warmed and ready to show and waiting at the gate. It is not acceptable to hold a ring for a hack or flat class.
- **Hunter Ticketing:** Hunter schooling is offered for 1 hour after the completion of the competition on Friday & Sunday in the ring that completes first. The cost is \$40.00 per ticket, per horse. This is for 2025 Silver Pass holders only. Back numbers are required.
- **Jumper Ticketing:** Jumper schooling is offered for 1 hour after the completion of jumper classes on Friday & Sunday in the ring that completes first. The cost is \$40.00 per ticket, per horse. This is for 2025 Silver Pass holders only. Back numbers are required.

## PONY HUNTERS

### PER EC ARTICLE G306

G306.2 Adults are permitted to show (be judged) on large ponies in miscellaneous non-point classes not limited to juniors and Adult Amateurs may ride large ponies in adult amateur classes where fences do not exceed 3' (0.90m).

***A pony shown in any judged class(es) by an adult may not be shown in judged classes by a junior at the same competition.***

### AGE ELIGIBILITY

- (a) For show purposes, ponies are to be divided as follows:
  - Large Ponies - over 13.2 hands, but not to exceed 14.2 hands.
  - Medium Ponies - over 12.2 hands, but not to exceed 13.2 hands.
  - Small Ponies - do not exceed 12.2 hands.
- (b) Riders in Pony Hunter Classes:
  - Junior 'A' Riders may ride Large ponies only.
  - Junior 'B' and Junior 'C' Riders may ride ponies of all heights.



VISIT  
**GREENHAWK**<sup>®</sup>  
EQUESTRIAN SPORT

at Angelstone Tournaments  
and Caledon Equestrian Park





# SILVER SERIES MEDAL DESCRIPTION

## SILVER SERIES HUNTER MEDAL – Class #23 (2'9")

Originally created in the image of the Jump Canada Medal, the Silver Series Medal class has evolved into a specialty class and a favourite amongst the Hunter riders. Where contradiction exists, these specifications supersede those of the Equine Canada Jump Canada Medal. These classes are open to Junior and Amateur riders only. Riders may walk the course.

**First Phase - Over Fences:** Figure eight course of no less than eight jumps. Fences not to exceed 2'9". Class is judged in accordance with Article G1008 Class Routine Over Fences. No additional test over fences is permitted.

**Second Phase - On the Flat:** All competitors or a maximum of ten shall be called back to perform at the walk, trot, and canter. From a maximum of four competitors, the judge may call for a minimum of two or more requirements from Article G1009 Tests (Equine Canada Rule Book Section G).

**Scoring:** Medal classes will be judged 60% over fences and 40% on the flat.

**Tack & Equipment:** All tack and equipment remain the same for both phases. Restrictions as per Article G1003 through G1005.

## SILVER SERIES JUMPER MEDAL – Class #22 (0.9m)

Originally created in the image of the CET Medal, the Jumper Medal has evolved into a specialty class favorite to jumper riders. These specifications supersede those of the Equestrian Canada CET Medal. This class is open to Junior and Amateur riders only. It is judged with both a jumping and a flat phase.

**Jumping Phase:** The jumping phase should be over a course of at least nine (9) fences. Fences will not exceed 0.9m in height with a spread not to exceed the height. The course must contain at least one double or triple combination with at least one spread fence. Other spread fences are required elsewhere on the course. Liverpool is optional.

**Flat Phase:** All riders, or a maximum of twelve who complete the Jumping Phase, shall be called back to perform on the flat. During the flat phase, riders will show a working walk, the working trot sitting, the working trot rising and showing a lengthening of stride, the working canter, and the working canter showing a lengthening of stride. The top four riders in the flat phase will be asked to complete a short test determined by the judge. When this test is being ridden, the riders will turn their backs so they cannot watch the other competitors.

**Judging:** Jumping phase is to be conducted under current Equestrian Canada jumper rules. In addition, the class will be judged on seat, hand, guidance, and control. Jumper Medal is to be judged 60% over fences and 40% on the flat.

**Tack & Equipment:** All tack and equipment remain the same for both phases. Only running martingales used in a conventional manner are permitted. No standing martingales, German martingales, draw reins or restricted running martingales are permitted. Conservative colored headgear (As per Article G1103) must be worn, with no additional adornment. Stirrups are restricted as per Article G1102.

# SILVER JUMPER CLASS SPECS

Jumpers riders are only eligible to move down 1 division height from their first class height jumped but may move up to any height. This is only applicable per show event and each show can be considered a new height starting point. Jumper riders can enter by division or may enter up to 4 individual classes (all height restrictions and class specs apply).

**0.9m Jumper:** Open to all horses and ponies. Maximum height of fences to be 0.9m. Run under Table A and FEI Article 238.2.2.2

- Class #13                      Table PS
- Class #15                      Table A Classic

**1.0m Jumper:** Open to all horses and ponies. Maximum height of fences to be 1.0m. Run under Table A and FEI Article 238.2.2.2

- Class #16                      Table PS
- Class #17                      Table A Classic

**Open Jumper Division 1.10m:** Open to all horses and ponies. Maximum height of fences to be 1.10m. Run under Table A and FEI Article 238.2.2.2

- Class #101                      \$400 Open Welcome (Immediate Jump-Off)
- Class #100                      \$1,000 Grand Prix (Return Jump-Off)

**1.10m & 1.20m Farewell Competition:** Table A Speed. Open to all. Competitors may jump 1.10m or 1.20m. This competition is not part of a division. Entry Fee \$40. This competition is not included in the series pass.

# SILVER HUNTER CLASS SPECS (1/2)

All Silver rated Hunter Divisions will consist of 2 Over Fences and 1 Under Saddle. To be eligible to compete in the under saddle, entries must have completed at least 1 course Over Fences.

**2'6" Open Hunter** - Open to all. Fences not to exceed 2'6". Lines will not be adjusted for ponies.

- Class #58, 59                      Over Fences
- Class #60                      Under Saddle

**2'6" Beginner Children's Hunter** - Open to all junior riders. Fences not to exceed 2'6". May be combined with Beginner Adult Hunter if entries warrant. Horse/Rider combinations in this division are not permitted to cross enter any other "modified" divisions. (Ex. 2'3" novice, 2'9" low)

- Class #158, 159                      Over Fences
- Class #160                      Under Saddle

**2'6" Beginner Adult Hunter** - Open to all amateur riders. Fences not to exceed 2'6". May be combined with Beginner Children's Hunter if entries permit. Horse/Rider combinations in this division are not permitted to cross enter the 2'3" Novice Hunters or 2'9" Low Children/Adult Hunter divisions but may enter 2'3" or 2'6" Open Hunter divisions.

- Class #258, 259                      Over Fences
- Class #260                      Under Saddle

**2'9" Open Hunter** - Open to all. Fences not to exceed 2'9". Over Fences.

- Class #61, 62                      Over Fences
- Class #63                      Under Saddle



# SILVER HUNTER CLASS SPECS (2/2)

**2'9" Low Children's Hunter** - Open to all junior riders. Fences not to exceed 2'9". May be combined with Low Adult Hunter if entries permit. Horse/Rider combinations in this division are not permitted to cross enter the 2'6" Beginner Hunters or Children's or Adult Hunter divisions but may enter 2'6" or 2'9" Open Hunter divisions.

- Class #161, 162 Over Fences
- Class #163 Under Saddle

**2'9" Low Adult Hunter** - Open to all amateur riders. Fences not to exceed 2'9". May be combined with Low Children's Hunter if entries permit. Horse/Rider combinations in this division are not permitted to cross enter the 2'6" Beginner Hunters or Children's or Adult Hunter divisions but may enter 2'6" or 2'9" Open Hunter divisions.

- Class #261, 262 Over Fences
- Class #263 Under Saddle

**3'0" Open Hunter** - Open to all. Fences not to exceed 3'0".

- Class #64, 65 Over Fences
- Class #66 Under Saddle

**3'0" Child/Adult Hunter** - Open to all junior and amateur riders. Fences not to exceed 3'0". Horse/Rider combinations in this division are not permitted to cross enter the 2'9" Low Hunter divisions but may enter 2'9" or 3'0" Open Hunter divisions.

- Class #164, 165 Over Fences
- Class #166 Under Saddle

**3'3" Open Hunter** - Open to all. Fences not to exceed 3'3".

- Class #67, 68 Over Fences
- Class #69 Under Saddle

**3'3" Low Junior/Amateur Hunter** - Open to all junior and amateur riders. Fences not to exceed 3'3".

- Class #167, 168 Over Fences
- Class #169 Under Saddle

**Small Pony Hunter** - Open to ponies 12.2 hh and under. Judges look for a rider suitably mounted. According to current Equestrian Canada rules. NOTE: Only B or C riders may ride small ponies. Small: 2'3" fences

- Class #43, 44 Over Fences
- Class #459 Under Saddle

**Medium Pony Hunter** - Open to ponies 13.2 hh and under. Judges look for a rider suitably mounted. According to current Equestrian Canada rules. NOTE: Only B or C riders may ride medium ponies. Medium: 2'6" fences

- Class #46, 47 Over Fences
- Class #48 Under Saddle

**Large Pony Hunter** - Open to ponies exceeding 13.2 hh but not exceeding 14.2 hh. Fences according to current Equestrian Canada rules. Open to junior riders only. Judges look for a rider suitably mounted. Open to riders under 18 as of January 1<sup>st</sup>, 2025. Fence height: 2'9".

- Class #49, 50 Over Fences
- Class #51 Under Saddle

**Small Hunter Horse** - Open to horses 14.3 hh - 15.3 hh. Fence heights 2'6" & 2'9". Height must be declared at the in-gate prior to the start of the division.

- Class #290, 291 Over Fences
- Class #292 Under Saddle

# EQUITATION DIVISION

Heights are set according to equitation age(s). 2'9" for A equitation riders, 2'6" for B equitation riders, 2'3" for C equitation riders and 2'6" for Adult Equitation riders. The course will be set on a 12 ft stride with no combinations. Traditional and handy courses will be offered. Please note the equitation on the flat class(es) may be entered individually. One horse/pony per rider and no double rides on the same horse.

Protective boots are permitted in equitation classes. Bronze level membership required for these classes.

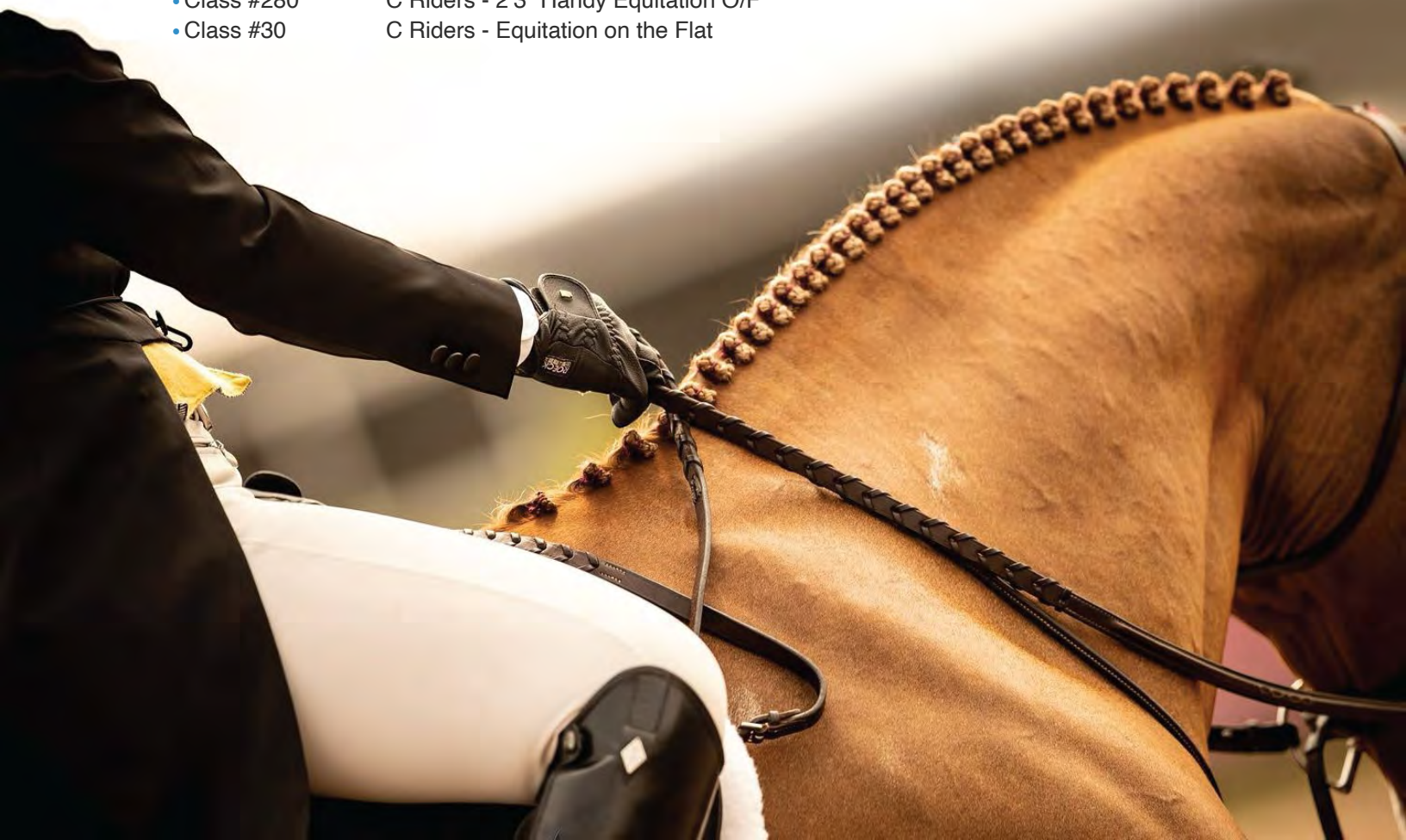
**Junior Equitation** - Individuals are juniors until the end of the calendar year in which they reach the age of 18.

Junior 'A' - A rider who is 15, 16, or 17 on January 1st, 2025.

Junior 'B' - A rider who is 12, 13, or 14 on January 1st, 2025.

Junior 'C' - A rider who is under 12 on January 1st, 2025.

- Class #270 A Riders - 2'9" Traditional Equitation O/F
- Class #271 A Riders - 2'9" Handy Equitation O/F
- Class #28 A Riders - Equitation on the Flat
- Class #273 B Riders - 2'6" Traditional Equitation O/F
- Class #274 B Riders - 2'6" Handy Equitation O/F
- Class #29 B Riders - Equitation on the Flat
- Class #276 Adult Amateur Riders - 2'6" Traditional Equitation O/F
- Class #277 Adult Amateur Riders - 2'6" Handy Equitation O/F
- Class #24 Adult Amateur Riders - Equitation on the Flat
- Class #279 C Riders - 2'3" Traditional Equitation O/F
- Class #280 C Riders - 2'3" Handy Equitation O/F
- Class #30 C Riders - Equitation on the Flat



# BRONZE DIVISION SPECS (1/2)

Jumper riders are only eligible to move down 1 division height from their first class height jumped but may move up to any height. This is only applicable per show event and each show can be considered a new height starting point. Jumper riders can enter by division or may enter up to 4 individual classes (all height restrictions and class specs apply).

## BRONZE JUMPER

Run under Table A, FEI Article 238.2.2 unless otherwise specified.

**Crossrail Jumper** - Open to all horses and ponies. Juniors and Amateurs. Maximum height of fences to be 18". Courses will contain a maximum of ten obstacles and will contain no combination obstacles. Riders showing in this division may cross enter into the Walk/Trot division, Crossrail Hunter, Puddle Hunter, Flat division, Children's Pony and corresponding Equitation classes.

- Class #1 Power & Speed (FEI Rule 274.2.5)
- Class #2 Table A Speed (Art 238.2.1)
- Class #3 Table A Classic

**0.6m Jumper** - Open to all horses and ponies. Pros are eligible to compete with out scores. Scores will be given to juniors and amateur riders only. Maximum height of fences to be 0.6m. Courses will contain a maximum of ten obstacles and will contain no combination obstacles. Riders showing in this division may cross enter in the Crossrail Hunter, Crossrail Jumper, Puddle Hunter, 2'0" Hunter, Flat division, 0.7m Jumper and corresponding Equitation classes.

- Class #4 Power & Speed (FEI Rule 274.2.5)
- Class #6 Table A Classic

**0.7m Jumper** - Open to all horses and ponies. Maximum height of fences to be 0.7m. Courses will contain a maximum of ten obstacles and may contain combinations but no oxers.

- Class #7 Power & Speed (FEI Rule 274.2.5)
- Class #9 Table A Classic

**0.8m Jumper** - Open to all horses and ponies. Maximum height of fences to be 0.8m.

- Class #10 Power & Speed (FEI Rule 274.2.5)
- Class #12 Table A Classic

**Pony Jumper** - Open to ponies only. Juniors only. Maximum height of fences to be 0.75m.

- Class #71 Power & Speed (FEI Rule 274.2.5)
- Class #72 Table A Classic

## BRONZE HUNTER

All Hunter Divisions will consist of 2 Over Fences and 1 Under Saddle. To be eligible to compete in the under saddle, entries must have completed at least 1 course over fences. Protective boots, flashes, and drop nosebands are not permitted. Standing martingales may be used for over fences classes only.

**2'0" Open Hunter** - Open to all. Fences not to exceed 2'0".

- Class #52, 53 Over Fences
- Class #54 Under Saddle

**2'3" Open Hunter** - Open to all. Fences not to exceed 2'3".

- Class #55, 56 Over Fences
- Class #57 Under Saddle

# BRONZE DIVISION SPECS (2/2)

**2'3" Novice Children's Hunter** - Open to all junior riders. Fences not to exceed 2'3". May be combined with Novice Adult Hunter if entries warrant. Horse/Rider combinations in this division are not permitted to cross enter any other "modified" divisions. (Ex. 2'6" beginner's)

- Class #155, 156 Over Fences
- Class #157 Under Saddle

**2'3" Novice Adult Hunter** - Open to all amateur riders. Fences not to exceed 2'3". May be combined with Novice Children's Hunter if entries warrant. Horse/Rider combinations in this division are not permitted to cross enter any other "modified" divisions. (Ex. 2'6" beginner's)

- Class #255, 256 Over Fences
- Class #257 Under Saddle

**Children's Pony Hunter** - Fence heights 2'0" or 2'3". Open to riders who are under 18 as of January 1<sup>st</sup>, 2025. Declaration of height must be made at the in-gate before the division begins. Competitors may move both up and down in heights between shows, but competitors may not change heights once the division has started.

- Class #40, 41 Over Fences
- Class #39 Under Saddle

**Crossrail Hunter** - Open to all junior/amateur riders. Maximum 8 fences, no combinations. Open to horses and ponies, however, lines will not be adjusted. Courses will contain a maximum of eight obstacles and will contain no combination obstacles. Riders showing in this division may cross enter into the Walk/Trot division, Puddle Hunter, Crossrail Jumper, 0.6m Jumper division, Flat division and corresponding Equitation Flat class.

- Class #31, 32 Over Fences
- Class #33 Under Saddle

**Puddle Hunters** - Open to all junior/amateur riders. Maximum 8 fences, verticals only, max height 18". Open to horses and ponies, however, lines (distances) will not be adjusted. Ideally horse/rider combinations can ride all lines with the same consistency in rhythm and pace.

Riders showing in this division may cross enter into the Crossrail Hunter division, Crossrail Jumper, 0.6m Jumper, 2'0" Open Hunter, Flat division and corresponding Equitation Flat classes, but not both.

## 10 & Under

- Class #34, 35 Over Fences
- Class #36 Under Saddle

## 11 & Over

- Class #37, 38 Over Fences
- Class #39 Under Saddle

**Flat** - Horses showing in the Flat division may be of any breed or combination of breeds. An additional requirement of Road Hack will be the demonstration of strong trot. Additional requirements of Show Hack will be collected and extended gaits. Both Road and Show Hack may be required to Hand Gallop. Martingales, breastplates, boots of any kind, and/or bandages are not permitted. Drop flash nosebands prohibited. Browbands shall be leather of any description but not solid white, coloured, or sequined. Whips are not permitted in any hack class. In the event of a tie for Champion or Reserve Champion, horses shall be shown in hand and judged on Confirmation.

- Class #25 Road Hack (Article F1102)
- Class #26 Show Hack (Article F1101)
- Class #27 Pleasure Hack (Article F110)

**Walk/Trot U10 Hunter** - Open to riders under the age of 10 as of January 1<sup>st</sup>, 2025. Open to horses and ponies. Riders showing in this division are only eligible to compete in the Crossrail Hunters and Crossrail Jumper.

- Class #137 Walk/Trot Equitation
- Class #138 Walk/Trot Under Saddle
- Class #139 Walk/Trot Poles

**Walk/Trot 11+ Hunter** - Open to riders over the age of 10 as of January 1<sup>st</sup>, 2025. Open to horses and ponies. Riders showing in this division are only eligible to compete in the Crossrail Hunters and Crossrail Jumper.

- Class #237 Walk/Trot Equitation
- Class #238 Walk/Trot Under Saddle
- Class #239 Walk/Trot Poles

**Lead Line** - FREE ENTRY. Open to children who have not passed their 8<sup>th</sup> birthday as of January 1<sup>st</sup>, 2025. Riders may not cross enter any other class. Riders and ponies must be led by a capable handler 16 years and older.

- Class #70 Lead-Line

# SPECIALTY CLASSES

## Hunter Derbies

The Hunter Derbies will run Sunday One round format. Fence heights 2'0", 2'6" or 3'0". This class will be conducted over a lengthened hunter track judged with a hunter score, handy score and low/high jump options. All scores will be announced. The combined total scores determine placing. Scores will be written down.

Ribbons to 1<sup>st</sup> - 10<sup>th</sup>. Prize money paid to 8<sup>th</sup> place.

A minimum of 12 competitors to run the class for FULL PRIZE MONEY.

- |              |                                   |                    |
|--------------|-----------------------------------|--------------------|
| • Class #200 | 3'0" Angelstone Hunter Derby      | Prize Money: \$400 |
| • Class #201 | 2'6" Angelstone Hunter Derby 18+  |                    |
| • Class #202 | 2'6" Angelstone Hunter Derby U17  |                    |
| • Class #203 | 2'6" Angelstone Pony Hunter Derby |                    |
| • Class #204 | 2'0" Angelstone Hunter Derby 18+  |                    |
| • Class #205 | 2'0" Angelstone Hunter Derby U17  |                    |
| • Class #206 | 2'0" Angelstone Pony Hunter Derby |                    |

*\*One Hunter Derby per entry - see Rules & Regulations*

## Mini Prix Series

This class will be conducted over a lengthened jumper course. Table A format with immediate jump-off. All scores and times will be announced.

Class #96 is only open to entries from the .60m & .70m divisions.

Class #97 is only open to entries from the .70m & .80m divisions.

Class #98 is only open to entries from the .80m & .90m divisions.

Class #99 is only open to those showing in the 0.90 and the 1.0m and cannot cross enter the Grand Prix.

- |             |                         |                |
|-------------|-------------------------|----------------|
| • Class #96 | .65m Mini Prix          | No prize money |
| • Class #97 | .75m Mini Prix          | No prize money |
| • Class #98 | .85m Laughton Mini Prix | No prize money |
| • Class #99 | .95m Mini Prix          | No prize money |

*\*Only one mini Prix per horse/rider combo*

# SPECIALTY CLASSES - PLAYOFFS ONLY

## Silver Series Nations Cup Class

Teams of 4 top placed .60m, .70m, .80m, and .90m riders from each Zone will be invited to compete in this class. If the top placed rider does not want to compete in this class, the next in the rankings will be invited. A random Wildcard team will be invited to compete in this class at the Playoffs. Nations Cup format with no drop scores and all rounds to count. In the case of a tie, a jump-off will occur.

- |              |                      |  |
|--------------|----------------------|--|
| • Class #800 | .60m-.90m Grand Prix | No prize money - Ribbons & Prizes only |
|--------------|----------------------|--|



# WILLOW

EQUESTRIAN

## Tack Store Boutique



COME AND VISIT OUR MOBILE UNIT AT ANGELSTONE AND  
LET OUR FRIENDLY STAFF STYLE YOU AND YOUR HORSE FOR  
THE SHOW RING THIS YEAR. #STYLEDBYWILLOW

[WWW.WILLOWEQUESTRIAN.COM](http://WWW.WILLOWEQUESTRIAN.COM)

519-400-4007

5743 6TH LINE, ROCKWOOD, ONTARIO



Wishing everyone involved  
with the Angelstone Silver Series  
a successful and fulfilling season!

**SISKINDS** | The law firm

[siskinds.com](https://siskinds.com)

519.672.2121

# 2025 ANGELSTONE EVENTS BIOSECURITY FORM



**All horses must be accompanied by the following:**

1. A statement of Health consisting of either an Interstate Health Certificate or CVI (Certificat of Veterinary Inspection - found below).
2. A Valid Coggins Certificate issued not not exceeding 6 months prior to competition must be presented at the show office in order to pick up numbers. (Horses traveling from the US Only)

---

## Certificate of Veterinary Inspection

**One form PER HORSE to be completed by veterinarian**

**Name of Horse:** \_\_\_\_\_

**Name of Owner:** \_\_\_\_\_

## Date and Name of Most Recent Vaccinations

**Date for EHV-1/4:** \_\_\_\_\_ **Name of vaccine:** \_\_\_\_\_

**Date for EIV:** \_\_\_\_\_ **Name of vaccine:** \_\_\_\_\_

1. The horse named above has been enrolled in a regular and consistent program of vaccination against EHV-1/4 and EIV as per EC rules.
2. Has not shown any symptoms of, or been treated for, EHV-1/4 and EIV within the past 28 days.
3. Has not been exposed to any horses that have shown any symptoms of or been treated for, EHV-1/4 and EIV within the past 28 days.

**Veterinarian (please print):** \_\_\_\_\_

---

**Veterinarian Signature**

---

**Date**





A DIVISION OF C.J. McDONALD CO. LTD  
29 ADVANCE RD, TORONTO, ON M8Z 2S6

OFFICE: 416-236-1001

**SARAH (TEXT ONLY): 416-888-0968**  
ALBIONGOLFCARS.COM

## CALEDON EQUESTRIAN PARK - Golf Cart Rental Form 2025

In consideration of the terms and conditions set forth herein, customer named below, ("Customer") and Albion Golf Cars ("Vendor") hereby agree as follows:

CONTACT INFORMATION (CUSTOMER OPERATING GOLF CART MUST PICK-UP)	
FULL NAME:	DRIVERS LICENSE #:
CELL PHONE #:	EMAIL:

### **PALGRAVE ONLY** GOLD SERIES, SILVER SERIES, DRESSAGE

**4-PASSENGER CART:** 1-3 days: \$105 /day | 4-6 days: \$95/day | 7+ consecutive days: rate upon request\*\*

\*\*GOLD SERIES ONLY - Only applicable to consecutive-day rentals

**Maximum two (2) shows per form - please put back-to-back shows on the same form**

NOTE: You will be charged from the date you pick-up the cart to the date you return it - we do not rent by the hour

SHOW	PICK-UP DATE	RETURN DATE	TOTAL
#1			
#2			

CREDIT CARD NUMBER: _____	SUBTOTAL:
EXPIRY: _____ SECURITY #: _____	HST 13%:
CARDHOLDER NAME: _____	TOTAL (CAD):

SIGNATURE: \_\_\_\_\_

CARD MUST BE VALID AT SHOW TIME ~ IF CARD IS COMPROMISED BETWEEN BOOKING AND THE SHOW, PLEASE NOTIFY SARAH

PAYMENT BY E-TRANSFER ALSO ACCEPTED BUT A CREDIT CARD MUST BE ON FILE FOR INCIDENTALS; PLEASE EMAIL SARAH FOR DETAILS: SARAH@ALBIONGOLFCARS.COM

### TERMS & CONDITIONS OF RENTAL AGREEMENT - PLEASE READ CAREFULLY

- Vendor (Albion) presents all rental vehicles as in good working order at delivery. Vehicles are used golf cars and customer can accept the vehicle 'as is', 'with all the faults' condition, without any warranty or representation, either express or implied, as to merchantability or the fitness of the car(s) for any particular purpose. Customer assumes all responsibility for and all risk of loss, damage or injury, including death that may occur to the undersigned in connection with the use of any car(s) during the rental period.
- Customer hereby releases Vendor and shall indemnify, defend and save Vendor harmless from any/all liability, loss, damage, expense, causes of action, attorney's fees, suits, claims or judgments, whether in law or equity arising from any injury to a person(s) or property resulting from or based on the actual or alleged use, operation, delivery, or transportation of any or all of the car(s) below. Customer must at their own expense defend and any all suits, which may be brought against Vendor, either alone or in conjunction with others, upon, said liability or claim(s). Customer shall pay, satisfy and discharge any and all judgments or fines that may be covered against Vendor in any such action.
- Customer will provide, at their own expense, their own insurance to cover and said liability claims by any person(s), operator(s), or passenger(s) in amounts and against risks including public liability, loss, theft, damage, fire, destruction or vandalism acceptable to Vendor. In any event Vendor or Park Operations will not be liable for damage or theft, whether direct, incidental, special or consequential in excess of the leasing fee by Customer, whether or not Vendor has knowledge that such damage might be incurred, including, but not limited to, loss of income or profits. Vendor to be named as additional insured in insurance policy. Customer to provide proof of insurance to vendor upon request.
- Customer is responsible and agrees to pay for any and all damages to or theft of the car(s) up to the value of the car(s) or \$10,000 per golf car. Customer shall report theft, accidents or damage to the car immediately to Vendor. Customer will pay for and said damages to or theft of the car(s) leased under this agreement by the credit card identified below. Customer may not assign its rights under this Agreement.
- All drivers MUST be of legal driving age in the Province of Ontario and possess a valid driver's license. Park operators are authorized to confiscate vehicle immediately without refund for anyone without a valid G2/G license. Car can only be used for what it is designed for. Do not attempt to tamper with or alter speed of the golf car. Remove the key and secure car when not in use with lock and cable provided. One key fits all cars owned or leased by Vendor. Customer acknowledges that he/she has the right to inspect the car(s) and that the same are in good condition. For all purposes of this Agreement, acceptance of the car(s) and the condition thereof shall be conclusively established by Customer's taking possession of the car(s). Once the car(s) leave the possession of the vendor, Customer assumes the entire risk of loss, theft, damage or destruction to the car(s) from any cause whatsoever.
- Customer is responsible for golf cart from pick-up to return, even if they vacate the park. Lock and cable provided must be used at all times when not in use. Customer must return cart to the exact location and manner at which it was found; Abandoned carts, unlocked locks or any other misconduct is subject to a financial penalty at Vendors discretion
- No alteration or amendment hereof shall be binding on either party unless reduced to writing and signed by the party against whom such alteration or amendment is asserted. The validity in whole or in part of any of the terms of the agreement shall not affect the validity of any other term and all remedies available to either party for breach of contract are cumulative and may be exercised concurrently or separately. This Agreement shall be governed by and constructed in accordance with the laws of the Province of Ontario
- In event of any legal action including arbitration proceedings, or collection efforts seeking enforcement of the Agreement, Vendor shall be entitled to recover all collection fees, attorney's fees and cost of such proceedings from Customer, Whether litigation is pursued or not.
- Cancellations are permitted up to 24 hours before pick-up date; No cancellation fee applies; Rented carts are non-refundable under any circumstances unless otherwise discussed with Vendor
- Valid credit card required. You hereby irrevocably authorize Vendor to charge your credit card for any amounts due Vendor under this Agreement, including any amounts due for damage to or theft or loss of a car under this agreement.

**PLEASE READ CAREFULLY: SIGN AND SEND A LEGIBLE SCAN/PHOTO OF FORM TO SARAH BY EMAIL [sarah@albiongolfcars.com](mailto:sarah@albiongolfcars.com) OR TEXT 416-888-0968 TO INDICATE YOUR UNDERSTANDING OF THE ABOVE REGULATIONS AND AGREEMENT.**  
**WE NO LONGER ACCEPT FORM BY FAX.**

NAME (PLEASE PRINT)

SIGNATURE

DATE



## EC SPORT LICENSING 2025

# SAFETY, INCLUSIVITY, & EXCELLENCE

Your guide to the latest updates for the competition season in Canada

IMPORTANT CHANGES have been implemented to enhance the safety and inclusivity of equestrian sport. Whether you're an athlete, parent, coach, official, or competition staff, your role is crucial in upholding these standards. Here's what you need to know:

### SAFE SPORT TRAINING PREREQUISITE:

- The two free EC Safe Sport training modules must be completed before purchasing a Sport Licence. Check your training status on MyEC by clicking on the ECampus button.

### DISCONTINUED TEMPORARY LICENCES AND TEMPORARY HORSE REGISTRATIONS:

- Temporary EC Sport Licences are now discontinued at competitions. All riders, owners, and coaches must possess an EC Sport Licence to participate in events. All horses must have a Horse Recording where level and division require.

### AVAILABLE SHOW LEVEL UPGRADES:

- Explore higher-level competitions with temporary upgrades via your MyEC Portal. Note: National Rankings Points are not tabulated for upgraded results.

### COACH STATUS REQUIREMENTS:

- All coaches at EC-sanctioned events require EC Licensed Coach Status. For upgrading from Registered to Licensed Status, coaches can apply for a Temporary Coach Status (TCS) to fulfill the requirement for each event.
- New for 2025: A TCS may be purchased conveniently online via the MyEC Portal only. Each TCS is valid for a single event.

### EMPOWERING SELF-COACHED ATHLETES:

- Athletes without a coach on-site can declare themselves as self-coached by providing their name and EC Sport Licence number on their entry form. Coaches that are not present at the event with the athlete are not to be listed on the entry form.



“ When registering for EC sanctioned competitions, athletes must indicate the name of their coach on the entry form or specify that they are self-coached. Coaches from other countries, must be in good-standing with their home federation and must declare/have proof of insurance. See Rules of Equestrian Canada, Section A, General Regulations, Article 102, Safe Sport Environments. ”

**WWW.EQUESTRIAN.CA**

Fostering a love of horses  
and sport for life



**ONTARIO**  
EQUESTRIAN